

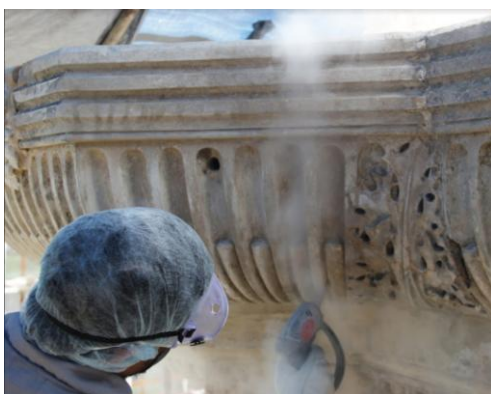
**Conservation of Flora Fountain, Mumbai:** Flora Fountain, at the Hutatma Chowk (Martyr's Square), , built in 1864, is an ornamentally and exquisitely sculpted architectural heritage monument located at the southern end of the historic Dadabhai Naoroji Road, in the heart of South Mumbai.

Over the years, the Portland stone fountain depicting the Roman goddess Flora, suffered due to application of multiple, thick stubborn layers of lime wash, coats of paint and other depositions including biological/algal growth, unscientific fillings as well as loss of parts.

The conservation work undertaken by the INTACH Conservation Institute team involved cleaning of entire fountain structure using steam machines to remove the multiple layers of deposition, removal of all previous improper unscientific cement plaster repairs and fillings. Algaecide treatment to arrest the biological growth as well as consolidation of stone. Further, filling and grouting of joints and gaps and reintegration of losses including fixing of carved hands and other loose, detached, broken parts was undertaken. The project was completed in December 2018.



*Removal of stubborn incrustations  
with micro chisel*



*Steam Cleaning*



*Flora sculpture before and after removal of layers of paint and  
other depositions*



*Flora fountain before and after removal of layers of paint and other depositions*